

NAI Farbman

November 2008

VACANT LAND PROPERTY LISTINGS

Beck Rd. and Michigan Ave.

Canton

DIMENSIONS: **SALE PRICE:** \$950,000

ZONING: C-3 **UTILITIES:**

Commercially zoned land with Michigan Ave. frontage. Close proximity to Home Depot, Kroger, TCF Bank and Bob Evans.

PDF FLYER: <http://www.farbman.com/Properties/BeckMichigan.pdf>

LISTING AGENT(s): Bunia Parker Ron Goldstone



Canton Center Rd - 7 Acres

Canton

DIMENSIONS: **SALE PRICE:** \$2,000,000

ZONING: **UTILITIES:**

Excellent exposure. Approximately 308' frontage on Canton Center Road. Located in the heart of Canton's Regional Retail Corridor. Will subdivide: \$700,000 per acre for frontage parcels, \$300,000 per acre for interior parcels.

PDF FLYER: <http://www.farbman.com/Properties/CherryHillCantonCenter-7Acres.pdf>

LISTING AGENT(s): Ron Goldstone



Cherry Hill - 22 Acres

Canton

DIMENSIONS: **SALE PRICE:** \$2,700,000

ZONING: R-3 **UTILITIES:**

22 Acres located in the heart of Canton's Growth Corridor with frontage on Cherry Hill Rd. Zoned R-3

PDF FLYER: <http://www.farbman.com/Properties/CherryHillCantonCenter-22Acres.pdf>

LISTING AGENT(s): Ron Goldstone



Cherry Hill Rd and Canton Center

Canton

Entire 5 Acres **DIMENSIONS:** 5.1 Acres **SALE PRICE:** \$2,000,000

ZONING: **UTILITIES:**

Prime Bank site opportunity. Next to CVS. Located in Canton's Regional Retail Corridor. Great exposure with 200' of frontage on Canton Center Rd. Can be divided into several pad sites

PDF FLYER: <http://www.farbman.com/Properties/CherryHillCantonCenter-5AcresFULLBACK.pdf>

LISTING AGENT(s): Ron Goldstone



NAI Farbman

November 2008

VACANT LAND PROPERTY LISTINGS

Cherry Hill Rd and Canton Center

Bank Site

Canton

DIMENSIONS: 5.1 Acres

SALE PRICE: \$750,000

ZONING:

UTILITIES:

Prime Bank site opportunity. Next to CVS. Located in Canton's Regional Retail Corridor. Great exposure with 200' of frontage on Canton Center Rd. More pad site available. Part of a 5 acre parcel

PDF FLYER: <http://www.farbman.com/Properties/CherryHillCantonCenter-5AcresFULLBACK.pdf>

LISTING AGENT(s): Ron Goldstone



SE corner of Michigan Ave. Hagger

Canton

DIMENSIONS:

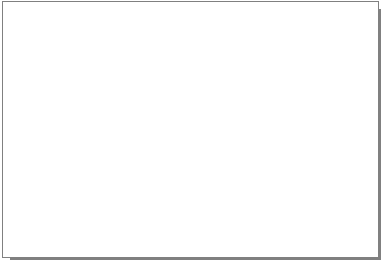
SALE PRICE: 395,000.00

ZONING:

UTILITIES:

PDF FLYER: <http://www.farbman.com/Properties/>

LISTING AGENT(s): Brian Crawford



29579 Twenty-Three Mile Rd

Chesterfield

DIMENSIONS: 25.2 Acres (+/-)

SALE PRICE: "No Asking Price"

ZONING: Retail or Multi-family

UTILITIES:

Prime development parcel at the northeast corner of I-94 / 23 Mile Rd interchange 1,000 + FT exposure to I-94 traffic. Area of new retail development with national retailers. Great for multi-family, senior housing, retail or medical.

PDF FLYER: <http://www.farbman.com/Properties/23Mile29579.pdf>

LISTING AGENT(s): Jeff Cavazos Todd Szymczak



47930 Gratiot Ave.

Chesterfield

DIMENSIONS: 501x697

SALE PRICE: \$1,200,000

ZONING: C-3/RM-3

UTILITIES:

Located at the intersection of Gratiot Ave. and New Forest Ct. Between 21 and 22 Mile Rd. Vacant land suitable for a multifamily development with commercial frontage. In area of neighborhood retail and additional rental units

PDF FLYER: <http://www.farbman.com/Properties/Gratiot47930.pdf>

LISTING AGENT(s): Doug Fura



NAI Farbman

November 2008

VACANT LAND PROPERTY LISTINGS

Haggerty Rd. and Pontiac Trail

Commerce Twp.



DIMENSIONS: .87 Net Acre Site

SALE PRICE:

ZONING: B-2

UTILITIES: water and sewer

.87 net acre site with 148' of frontage on Haggerty Rd. Zoned B-2. .58 net acre site with 150' of Pontiac Trail frontage. Water and sewer stubbed to the property line with detention service provided as part of the overall development. Shared access road.

PDF FLYER: <http://www.farbman.com/Properties/PontiacTrailHaggertyRd.pdf>

LISTING AGENT(s): Ron Goldstone

22 Bethune

Detroit



DIMENSIONS: .83 Acres

SALE PRICE: \$550,000

ZONING: B-4

UTILITIES: Includes utilities

36,155 SF in the New Center Area and across the street from the new CVS. Zoned B-4.

PDF FLYER: <http://www.farbman.com/Properties/Woodard Bethune.pdf>

LISTING AGENT(s): Ben Smith Erik Lawshe

Clark Street and Michigan Ave.

Detroit



Clark Street Technology Park

DIMENSIONS: 5 - 40 Acres

SALE PRICE:

ZONING: heavy industrial

UTILITIES:

Part of the Clark Street Technology Park Development. Zoned Heavy Industrial. Build-to-suit. Lots available for sale or lease.

PDF FLYER: <http://www.farbman.com/Properties/ClarkStreet-Vacant.pdf>

LISTING AGENT(s): Jeff Cavazos Doug Fura

Delaware, west of Woodward Ave.

Detroit



DIMENSIONS: 24,000 SF

SALE PRICE:

ZONING:

UTILITIES:

Paved, striped parking lot that is surrounded by a decorative fence.

PDF FLYER:

LISTING AGENT(s): Ben Smith



Commercial Real Estate Services, Worldwide.

28400 Northwestern Hwy, 4th Floor
Southfield, MI 48034-1839
(248) 353-0500 Fax (248) 353-0501

www.naifarbman.com

NAI Farbman

November 2008
VACANT LAND PROPERTY LISTINGS

2932-2942 West Grand Blvd.

Detroit



DIMENSIONS: 16,000 SF

SALE PRICE: \$525,000

ZONING: B-5

UTILITIES:

A vacant lot in the heart of the New Center Area. It is ideal for commercial use and is located close to several major freeways. The site is zoned B-5 (CBD).

PDF FLYER:

LISTING AGENT(s): Ben Smith

Mack and Lakepointe

Detroit



DIMENSIONS: 1.5 Acres

SALE PRICE: \$185,000

ZONING: C-2, P-1

UTILITIES: Includes utilities

Great for retail development. Minutes from I-94.

PDF FLYER:

LISTING AGENT(s): Brian Crawford

Pallister, west of Woodward Ave.

Detroit



DIMENSIONS: 17,000 SF

SALE PRICE: \$187,000

ZONING:

UTILITIES:

Paved, fenced and gated parking lots.

PDF FLYER:

LISTING AGENT(s): Ben Smith

16330 Nine Mile

Eastpointe



DIMENSIONS:

SALE PRICE:

ZONING:

UTILITIES:

150' frontage on Nine Mile Rd. Just off Gratiot. Close to I-94. Excellent visibility. Opportunity for office/medical/retail. 30,035 cars daily on Nine Mile.

PDF FLYER: <http://www.farbman.com/Properties/9Mile16330.pdf>

LISTING AGENT(s): Jeff Cavazos

NAI Farbman

November 2008

VACANT LAND PROPERTY LISTINGS

Evergreen ST.

Flat Rock



DIMENSIONS: 3.18 Acres

SALE PRICE: \$270,000

ZONING: O-1

UTILITIES:

 Vacant land located near Gibraltar Rd. West of Evergreen Street, north of medical building.

PDF FLYER: <http://www.farbman.com/Properties/Evergreen.pdf>

LISTING AGENT(s): Jeff Cavazos

N.W. Corner of Nadeau Rd and Me

Frenchtown Twp.




DIMENSIONS: 7 Acres

SALE PRICE: \$300,000

ZONING: IND

UTILITIES:

 Located close to I-75. Owner is very motivated. Frontage and access on both Nadeau and Mentel.

PDF FLYER: http://www.farbman.com/Properties/NadeauMentel_Flyer-1.pdf

LISTING AGENT(s): Jeff Cavazos

54500 Grand River

Lyon Township




DIMENSIONS: 26 Acres

SALE PRICE: \$5,200,000

ZONING: I-1, Light Industrial

UTILITIES:

 Excellent frontage on I-96 and Grand River. All utilities available. Light industrial zoning. Excellent freeway access. 628+/- feet of frontage on Grand River. 630+/- feet of frontage on I-96. City water and city sewer.

PDF FLYER: <http://www.farbman.com/Properties/GrandRiver54500.pdf>

LISTING AGENT(s): Doug Fura

Grand River Ave. and Milford Rd.

Lyon Twp.



DIMENSIONS: 515 Acres

SALE PRICE: For Sale

ZONING: I-2

UTILITIES: Sewer / Water

 Unique Oakland County development opportunity. Zoned I-2, mixed-use.

PDF FLYER:

LISTING AGENT(s): Ron Goldstone

Doug Fura

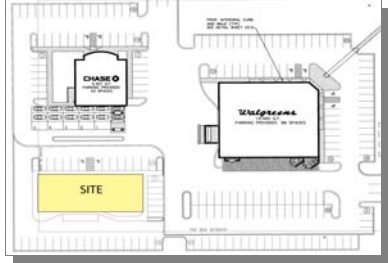
NAI Farbman

November 2008

VACANT LAND PROPERTY LISTINGS

21 Mile & Card Rd.

Macomb Township



DIMENSIONS:

SALE PRICE: \$300,000

ZONING: C-1, Local Commercial

UTILITIES:

6,900 SF fully improved building pad. Exclusive common area with 59 surface parking spaces. Entry from 21 Mile Road and Card Road. Join Walgreen's Pharmacy and Chase Bank.

PDF FLYER: <http://www.farbman.com/Properties/21&CardRd.pdf>

LISTING AGENT(s): Laney Cavazos Michelle Giorgi

Redman Rd.

Milan



DIMENSIONS: 28.5 Acres

SALE PRICE: \$1,000,000

ZONING: Commercial / Industrial

UTILITIES:

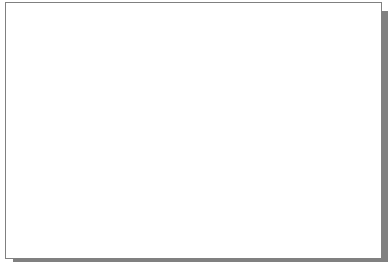
Frontage on Redman Road. Zoned Commercial / Industrial.

PDF FLYER: <http://www.farbman.com/Properties/Redman.pdf>

LISTING AGENT(s): Jeff Cavazos Doug Fura

56757 Grand River

New Hudson



DIMENSIONS: .5 to 3 Acres

SALE PRICE: \$599,000

ZONING:

UTILITIES:

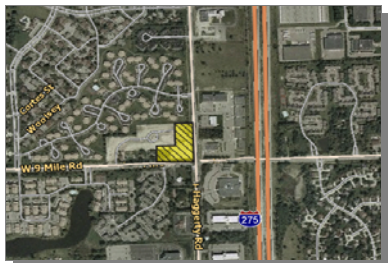
Part of an assemblage

PDF FLYER: <http://www.farbman.com/Properties/>

LISTING AGENT(s): Brian Crawford

Nine Mile and Haggerty Rd.

Novi



DIMENSIONS: 2.5 - 5 Acres

SALE PRICE: \$1,600,000

ZONING: Retail / Office

UTILITIES:

Available for sale or build-to-suit. Possible bank, retail, medical or office. Joint venture possible. Traffic count: 56,167 cars per day.

PDF FLYER: <http://www.farbman.com/Properties/9MileHaggertyRd.pdf>

LISTING AGENT(s): Brian Crawford

NAI Farbman

November 2008

VACANT LAND PROPERTY LISTINGS

Ten Mile & Beck

Novi



DIMENSIONS: 4 Acres **SALE PRICE:**

ZONING: **UTILITIES:**

Possible re-zoning to office from residential. For sale, lease or build-to-suit.

PDF FLYER: [NO FLYER AVAILABLE](#)

LISTING AGENT(s): Ron Goldstone

46881 Grand River Ave

Novi



Olde Town Office Village

DIMENSIONS: **SALE PRICE:** \$230-250 / SF

ZONING: **UTILITIES:**

Proposed beautifully styled medical/ general office development located right near Providence Park Hospital on Grand River Ave. Four buildings, each consisting of approximately 22,000-30,000 SF. Available for Sale or Lease

PDF FLYER: <http://www.farbman.com/Properties/GrandRiver46881.pdf>

LISTING AGENT(s): Laney Cavazos Michelle Giorgi

West Rd

Novi



Beck West Corporate Park

DIMENSIONS: 2.29 Acres **SALE PRICE:** \$465,000

ZONING: **UTILITIES:**

Possible build-to-suit of 19,500 sq. ft., Great R&D Development site. 371' frontage on West Rd. Entrance to the Beck West Corporate Park.

PDF FLYER: <http://www.farbman.com/Properties/West Rd-Novi.pdf>

LISTING AGENT(s): Jeff Cavazos Doug Fura

West Eight Mile Rd

Oak Park



Armory Industrial Park

DIMENSIONS: Up to 68 Acres **SALE PRICE:** \$4 / SF

ZONING: Industrial **UTILITIES:**

Single business tax credits. Build-to-suit opportunity. 50,000 to 1,000,000 sq. ft. Ideal for distribution, manufacturing or corporate headquarter uses.

PDF FLYER: <http://www.farbman.com/Properties/8Mile-ArmoryPark.pdf>

LISTING AGENT(s): Doug Fura Jeff Cavazos



Commercial Real Estate Services, Worldwide.

28400 Northwestern Hwy, 4th Floor
Southfield, MI 48034-1839
(248) 353-0500 Fax (248) 353-0501

www.naifarbman.com

NAI Farbman

November 2008

VACANT LAND PROPERTY LISTINGS

Michigan Ave.

Pittsfield Twp.



DIMENSIONS: 61 Acres

SALE PRICE: \$80,000 per acre

ZONING: A-6

UTILITIES:

Flat, clear property. Close proximity to the city of Saline. Over 1,500 SF of frontage on Michigan Ave. Possible uses include: Single family dwelling, golf driving range, greenhouse, schools or daycare, hospital, nursing home or churches.

PDF FLYER: http://www.farbman.com/Properties/Michigan-Pittsfield_Flyer.pdf

LISTING AGENT(s): Ron Goldstone

Plymouth Rd.

Pymouth Twp.



Plymouth Rd.

DIMENSIONS: 5 Acres

SALE PRICE: \$750,000

ZONING: NEC

UTILITIES:

5 acre commercial site next to Unisys Corporation on Plymouth Rd.

PDF FLYER: <http://www.farbman.com/Properties/PlymouthRd.pdf>

LISTING AGENT(s): Jeff Cavazos

Hamlin Rd and Dequindre

Rochester Hills



DIMENSIONS: 405' Hamlin, 1890'
Dequindre

SALE PRICE: \$1,100,000

ZONING: Light industrial

UTILITIES: Water and sewer

Zoned Industrial (possible retail site). 405' on Hamlin. 1,890' on Dequindre. Water and sewer available. Will divide.

PDF FLYER: <http://www.farbman.com/Properties/HamlinDequindre -1.pdf>

LISTING AGENT(s): Jeff Cavazos

Beverly Rd. between Merriman and

Romulus



Beverly Plaza

DIMENSIONS: 2.5 Acres

SALE PRICE: For sale

ZONING: Industrial

UTILITIES:

Build-to-suit opportunities.

PDF FLYER: [NO FLYER AVAILABLE](#)

LISTING AGENT(s): Brian Crawford

28400 Northwestern Hwy, 4th Floor
Southfield, MI 48034-1839
(248) 353-0500 Fax (248) 353-0501

www.naifarbman.com

NAI Farbman

Commercial Real Estate Services, Worldwide.

NAI Farbman

November 2008

VACANT LAND PROPERTY LISTINGS

35344 Ecorse Rd

Romulus



DIMENSIONS: 6.7 Acres

SALE PRICE: \$625,000

ZONING: Residential

UTILITIES:

Flat clean and clear. Priced to move.

PDF FLYER:

LISTING AGENT(s): Brian Crawford

35096 Ecorse

Romulus



DIMENSIONS: 4.83 Acres

SALE PRICE: \$350,000

ZONING: Commercial

UTILITIES:

Priced to move. Five acres, re-development opportunity. 330 ft of frontage by 620 deep.

PDF FLYER:

LISTING AGENT(s): Brian Crawford

Ecorse, Hubbard & Beverly

Romulus



DIMENSIONS: 20 Acres

SALE PRICE: \$400,000

ZONING: Commercial, Residential

UTILITIES: Includes all utilities

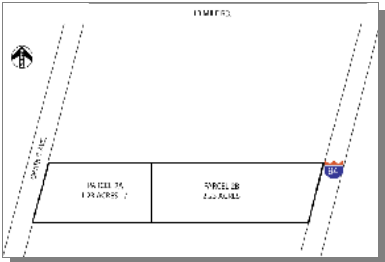
Zoned Residential. Located one mile from I-94 near Metro Airport. Will not divide.

PDF FLYER:

LISTING AGENT(s): Brian Crawford

30340 Gratiot

Roseville



DIMENSIONS: 3.46 Acres

SALE PRICE: \$2,100,000

ZONING: B-3

UTILITIES:

3.4 Acres prime commercial land. Zoned B-3. 227' of Gratiot Ave frontage. Excellent Northbound and Southbound access.

PDF FLYER: <http://www.farbman.com/Properties/Gratiot30340.pdf>

LISTING AGENT(s): Ron Goldstone

NAI Farbman

November 2008

VACANT LAND PROPERTY LISTINGS

M-59 and Schoenherr Rd.

Shelby Twp



Shelby Corners

DIMENSIONS: Outlot

SALE PRICE: For Sale

ZONING:

UTILITIES:

Located in the Shelby Corners Shopping Center. Regional shopping district services Sterling Heights, Shelby Twp. Utica, & Macomb Twp. Co-tenants include Target, Home Depot, Dick's & many more. 2 DEALS PENDING. 5,000 Sq. ft. Outlot still available.

PDF FLYER: <http://www.farbman.com/Properties/Shelby Corners Flyer ForLease.pdf>

LISTING AGENT(s): Ron Goldstone

Northwestern Hwy

Southfield



Oakland Commons

DIMENSIONS: 10.73 & 7.981 Acres

SALE PRICE: Negotiable

ZONING: R-C Regional Center

UTILITIES: DTE, AT&T, Consumers

Zoned R-C--Regional Center -- Mixed-use zoning, allows for a blend of office, retail and hospitality. 560 feet of Northwestern / M-10 Highway frontage. Great freeway access.

PDF FLYER: <http://www.farbman.com/Properties/Oakland Commons Land.pdf>

LISTING AGENT(s): Ron Goldstone

Northwestern Hwy

Southfield



Kaye Center

DIMENSIONS: 6.2 Acres

SALE PRICE: \$1,000,000

ZONING: B-3

UTILITIES:

Located in the center of Oakland County. Dense population, strong incomes and high traffic volume. Available for land-lease, build-to-suit, or possible sale. 450' frontage on Northwestern Hwy, and 200' on 12 Mile Rd. Great freeway access.

PDF FLYER: <http://www.farbman.com/Properties/KayeCenter.pdf>

LISTING AGENT(s): Ron Goldstone

21307 Telegraph Rd.

Southfield



DIMENSIONS: 16 - 30 Acres

SALE PRICE: For Sale

ZONING: Industrial

UTILITIES: Includes all utilities

16 acres re-development site. Brownfield credits available.

PDF FLYER: <http://www.farbman.com/Properties/Telegraph21301.pdf>

LISTING AGENT(s): Brian Crawford Harold Stulberg

NAI Farbman

November 2008
VACANT LAND PROPERTY LISTINGS

Telegraph Rd

Southfield

DIMENSIONS: 14 Acres

SALE PRICE: N/A

ZONING:

UTILITIES:

Confidential Listing.

PDF FLYER:

LISTING AGENT(s): Ron Goldstone



7700 15 Mile Rd

Sterling Heights

DIMENSIONS: 1.313 Acres

SALE PRICE: \$495,000

ZONING: C-3

UTILITIES:

Excellent property! Zoned C-3. Site located near Super Walmart, Target, and Meijers

PDF FLYER: <http://www.farbman.com/Properties/15Mile7700.pdf>

LISTING AGENT(s): Ron Goldstone



Tyler Rd. and Morton Taylor Rd.

Van Buren Twp.

DIMENSIONS: 10.80 Acres

SALE PRICE: \$8.00 per SF

ZONING: C-1

UTILITIES:

10.80 acres of prime commercial land in rapidly growing Van Buren Twp.

PDF FLYER:

LISTING AGENT(s): Ron Goldstone



Ecorse Rd. and Wayne Rd.

Wayne

DIMENSIONS: 5 Acres

SALE PRICE: \$500,000

ZONING: Retail

UTILITIES:

Corner location/retail site. Five flat acres on the southeast corner of Wayne Rd. and Ecorse Rd.

PDF FLYER:

LISTING AGENT(s): Brian Crawford



NAI Farbman

November 2008

VACANT LAND PROPERTY LISTINGS

2345 Merriman Rd.

Oakwood Healthcare Systems

Westland

DIMENSIONS: 7 Acres

SALE PRICE: \$2,500,000



ZONING: Commercial

UTILITIES: Utilities on site

Residential development opportunity.

PDF FLYER:

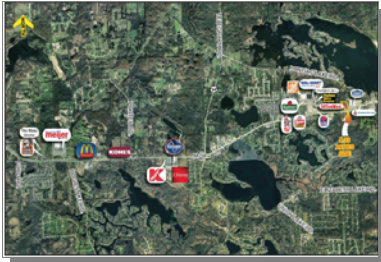
LISTING AGENT(s): Mark Yagerlener Laney Cavazos

M-59 and Pontiac Lake Rd.

White Lake Twp.

DIMENSIONS: 4.43 Acres

SALE PRICE: \$1,600,000



ZONING: G.B.

UTILITIES: Water and sewer

Prime commercial development site for build-to-suit. Approximately 273' frontage on M-59. Zoned General Business. Utilities available. Cross Access Agreement with Lowe's.

PDF FLYER: <http://www.farbman.com/Properties/White Lake Twp Proposal.pdf>

LISTING AGENT(s): Ron Goldstone

West & I-75

Detroit Truck Stop

Woodhaven

DIMENSIONS:

SALE PRICE: \$9,000,000



ZONING:

UTILITIES:

1/2 mile of freeway frontage. 30 usable acres. 300,000+ SF possible. Signaled intersection. Numerous outlots.

PDF FLYER: <http://www.farbman.com/Properties/DetroitTruckStop.pdf>

LISTING AGENT(s): Harold Stulberg