

NAI Farbman

December 2011
VACANT LAND PROPERTY LISTINGS

16330 Nine Mile

Eastpointe



DIMENSIONS: 1.25 Acres

SALE PRICE: \$

ZONING:

UTILITIES:

150' frontage on Nine Mile Rd. Just off Gratiot. Close to I-94. Excellent visibility. Opportunity for office/medical/retail. 30,035 cars daily on Nine Mile.

PDF FLYER: <http://www.farbman.com/Properties/9Mile16330.pdf>

LISTING AGENT(s): **Jeff Cavazos**

Nine Mile and Haggerty Rd.

Novi



DIMENSIONS: 5 Acres

SALE PRICE: \$ 1,600,000

ZONING: Retail / Office

UTILITIES:

Available for sale or build-to-suit. Possible bank, retail, medical or office. Joint venture possible. Traffic count: 56,167 cars per day.

PDF FLYER: <http://www.farbman.com/Properties/9MileHaggertyRd.pdf>

LISTING AGENT(s): **Brian Crawford**

Ten Mile & Beck

Novi



DIMENSIONS: 4 Acres

SALE PRICE: \$

ZONING:

UTILITIES:

Possible re-zoning to office from residential. For sale, lease or build-to-suit.

PDF FLYER:

LISTING AGENT(s): **Ron Goldstone**

7700 15 Mile Rd

Sterling Heights



1.3 Acres - Sterling Heights

DIMENSIONS: 1.313 Acres

SALE PRICE: \$ 495,000

ZONING: C-3

UTILITIES:

Excellent property! Zoned C-3. Site located near Super Walmart, Target, and Meijers

PDF FLYER: <http://www.farbman.com/Properties/15Mile7700.pdf>

LISTING AGENT(s): **Ron Goldstone**

NAI Farbman

December 2011

VACANT LAND PROPERTY LISTINGS

24 Mile & Van Dyke

Shelby Township



24 Mile & Van Dyke VACANT LAND

DIMENSIONS: 47.70 Acres

SALE PRICE: \$ 1,500,000

ZONING: C-6 & R-1-C

UTILITIES:

Southwest corner of 24 and Van Dyke. Commercial zoning on Van Dyke (C-6) and residential zoning on 24 Mile Rd. (R-1-C). Portion under contract to be developed as Senior living. Receiver directed sale.

PDF FLYER: <http://www.farbman.com/Properties/24MileVanDyke.pdf>

LISTING AGENT(s): **Todd Szymczak**

Baldwin Rd - 11.46 Acres

Lapeer



DIMENSIONS: 11.46 Acres

SALE PRICE: \$ 495,000

ZONING: office

UTILITIES:

Property sits next to new construction medical office building.

PDF FLYER: <http://www.farbman.com/Properties/Baldwin-11.46Acres.pdf>

LISTING AGENT(s): **Jeff Cavazos** **Laney Cavazos**

22 Bethune

Detroit



DIMENSIONS: 26,000 SF

SALE PRICE: \$ 550,000

ZONING: B-4

UTILITIES: Includes utilities

36,155 SF in the New Center Area and across the street from the new CVS. Zoned B-4.

PDF FLYER: <http://www.farbman.com/Properties/Woodard Bethune.pdf>

LISTING AGENT(s): **Jeanne Gross** **Erik Lawshe**

Vacant Beverly Rd

Romulus



Robbins

DIMENSIONS: 1.54 Acres

SALE PRICE: \$ 110,000

ZONING: light industrial

UTILITIES:

Quality ground up site location. Wayne County tax credits may exist for new development

PDF FLYER: <http://www.farbman.com/Properties/Beverly-Commercial Land.pdf>

LISTING AGENT(s): **Brian Crawford** **Paul DeBono**

NAI Farbman

December 2011

VACANT LAND PROPERTY LISTINGS

595, 611 and 631 Brown Rd

5 Acres

Orion Twp

DIMENSIONS: 5 Acres

SALE PRICE: \$ 400,000



ZONING:

UTILITIES:

Great visibility on Brown Rd. Located directly across the street from Ramco Gershenson Auburn Mile. Close proximity to Great Lakes Crossing Mall. Strong demographics. Surrounding tenants include best Buy, Costco, Meijer, Star Theatre, and more.

PDF FLYER: <http://www.farbman.com/Properties/Brown595-611-631.pdf>

LISTING AGENT(s): Ron Goldstone

Canton Center Rd - 7 Acres

Canton

DIMENSIONS: 7 Acres

SALE PRICE: \$ 2,000,000



ZONING:

UTILITIES:

Excellent exposure. Approximately 308' frontage on Canton Center Road. Located in the heart of Canton's Regional Retail Corridor. Will subdivide: \$700,000 per acre for frontage parcels, \$300,000 per acre for interior parcels.

PDF FLYER: <http://www.farbman.com/Properties/CherryHillCantonCenter-7Acres.pdf>

LISTING AGENT(s): Ron Goldstone

2 Outlots - Carpenter Rd

5.5 Acres - Miles of Golf, Pittsfield Twp

Pittsfield Twp

DIMENSIONS: 5.5 Acres

SALE PRICE: \$



ZONING:

UTILITIES:

Commercial land lease. Potential for 5.5 Acres with 583' frontage

PDF FLYER: <http://www.farbman.com/Properties/Carpenter-2Outlots.pdf>

LISTING AGENT(s): Ron Goldstone

49491 Cherry Hill

8 Acres

Canton

DIMENSIONS:

SALE PRICE: \$ 3,600,000



ZONING:

UTILITIES:



PDF FLYER:

LISTING AGENT(s): Ron Goldstone

NAI Farbman

December 2011

VACANT LAND PROPERTY LISTINGS

Cherry Hill - 22 Acres

Canton



DIMENSIONS: 22 Acres **SALE PRICE:** \$ 2,700,000

ZONING: R-3 **UTILITIES:**

22 Acres located in the heart of Canton's Growth Corridor with frontage on Cherry Hill Rd. Zoned R-3

PDF FLYER: [http://www.farbman.com/Properties/CherryHillCantonCenter-22 Acres.pdf](http://www.farbman.com/Properties/CherryHillCantonCenter-22%20Acres.pdf)

LISTING AGENT(s): Ron Goldstone

Cherry Hill & Superior Parkway

Westland



Brookfield Village

DIMENSIONS: Acres **SALE PRICE:** \$

ZONING: PUD **UTILITIES:**

50 fully developed residential lots. Premier location bordering Canton. Established community.

PDF FLYER: <http://www.farbman.com/Properties/http://www.farbman.com/Properties/BrooksideVillage.p>

LISTING AGENT(s): Michael Kalil

Clark Street and Michigan Ave.

Detroit



Clark Street Technology Park

DIMENSIONS: 40 Acres **SALE PRICE:** \$

ZONING: heavy industrial **UTILITIES:**

Part of the Clark Street Technology Park Development. Zoned Heavy Industrial. Build-to-suit. Lots available for sale or lease.

PDF FLYER: <http://www.farbman.com/Properties/ClarkStreet-Vacant.pdf>

LISTING AGENT(s): Jeff Cavazos Doug Fura

Delaware, west of Woodward Ave.

Detroit



DIMENSIONS: 24,000 SF **SALE PRICE:** \$

ZONING: **UTILITIES:**

Paved, striped parking lot that is surrounded by a decorative fence.

PDF FLYER:

LISTING AGENT(s): Erik Lawshe Jeanne Gross

NAI Farbman

December 2011
VACANT LAND PROPERTY LISTINGS

35096 Ecorse

Romulus

DIMENSIONS: 4.83 Acres

SALE PRICE: \$ 350,000

ZONING: Commercial

UTILITIES:

■ Priced to move. Five acres, re-development opportunity. 330 ft of frontage by 620 deep.

PDF FLYER:

LISTING AGENT(s): **Brian Crawford**



Ecorse, Hubbard & Beverly

Romulus

DIMENSIONS: 20 Acres

SALE PRICE: \$ 400,000

ZONING: Commercial, Residential

UTILITIES: Includes all utilities

■ Zoned Residential. Located one mile from I-94 near Metro Airport. Will not divide.

PDF FLYER:

LISTING AGENT(s): **Brian Crawford**



Evergreen ST.

Flat Rock

DIMENSIONS: 3.18 Acres

SALE PRICE: \$ 270,000

ZONING: O-1

UTILITIES:

■ Vacant land located near Gibraltar Rd. West of Evergreen Street, north of medical building.

PDF FLYER: <http://www.farbman.com/Properties/Evergreen.pdf>

LISTING AGENT(s): **Jeff Cavazos** **Erik Lawshe**



2932-2942 West Grand Blvd.

Detroit

DIMENSIONS: 16,000 SF

SALE PRICE: \$ 525,000

ZONING: B-5

UTILITIES:

■ A vacant lot in the heart of the New Center Area. It is ideal for commercial use and is located close to several major freeways. The site is zoned B-5 (CBD).

PDF FLYER:

LISTING AGENT(s): **Jeanne Gross**



NAI Farbman

December 2011
VACANT LAND PROPERTY LISTINGS

56757 Grand River

New Hudson



DIMENSIONS: 3 Acres

SALE PRICE: \$ 599,000

ZONING:

UTILITIES:

Part of an assemblage

PDF FLYER:

LISTING AGENT(s): **Brian Crawford**

Grand River Ave. and Milford Rd.

Lyon Twp.



515 Acres - Lyon Twp

DIMENSIONS: 515 Acres

SALE PRICE: \$

ZONING: I-2

UTILITIES: Sewer / Water

Unique Oakland County development opportunity. Zoned I-2, mixed-use.

PDF FLYER: http://www.farbman.com/Properties/515Acres-Lyon_Twp.pdf

LISTING AGENT(s): **Ron Goldstone Doug Fura**

54500 Grand River

Lyon Township



DIMENSIONS: 26

SALE PRICE: \$ 5,200,000

ZONING: I-1, Light Industrial

UTILITIES:

Excellent frontage on I-96 and Grand River. All utilities available. Light industrial zoning. Excellent freeway access. 628+/- feet of frontage on Grand River. 630+/- feet of frontage on I-96. City water and city sewer.

PDF FLYER: <http://www.farbman.com/Properties/GrandRiver54500.pdf>

LISTING AGENT(s): **Doug Fura**

47930 Gratiot Ave.

Chesterfield



6.11 Acres - Chesterfield Twp

DIMENSIONS: 6.11 Acres

SALE PRICE: \$ 1,200,000

ZONING: C-3/RM-3

UTILITIES:

Located at the intersection of Gratiot Ave. and New Forest Ct. Between 21 and 22 Mile Rd. Vacant land suitable for a multifamily development with commercial frontage. In area of neighborhood retail and additional rental units

PDF FLYER: <http://www.farbman.com/Properties/Gratiot47930.pdf>

LISTING AGENT(s): **Ron Goldstone**

NAI Farbman

December 2011

VACANT LAND PROPERTY LISTINGS

25450 Gratiot

Roseville



DIMENSIONS: 2.6 Acres

SALE PRICE: \$ 595,000

ZONING: I-1 Lt Industrial

UTILITIES:

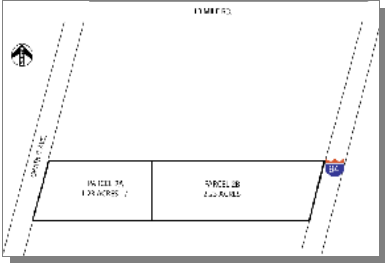
2.6 acre parcel Zoned light Industrial. 82' Gratiot frontage. Building very clean and roof recently replaced.

PDF FLYER: <http://www.farbman.com/Properties/Gratiot25450.pdf>

LISTING AGENT(s): **Ron Goldstone**

30340 Gratiot

Roseville



3.46 Acres - Roseville

DIMENSIONS: 3.46 Acres

SALE PRICE: \$ 2,100,000

ZONING: B-3

UTILITIES:

3.4 Acres prime commercial land. Zoned B-3. 227' of Gratiot Ave frontage. Excellent Northbound and Southbound access.

PDF FLYER: <http://www.farbman.com/Properties/Gratiot30340.pdf>

LISTING AGENT(s): **Ron Goldstone**

Haggerty Rd, North of Tyler

Belleville



DIMENSIONS: 6.10 Acres

SALE PRICE: \$ 500,000

ZONING: M-1

UTILITIES:

Vacant land - 6.1 acres zoned m-1

PDF FLYER: <http://www.farbman.com/Properties/>

LISTING AGENT(s): **Doug Fura**

Hamlin Rd and Dequindre

Rochester Hills



DIMENSIONS: 18 Acres

SALE PRICE: \$ 650,000

ZONING: Light industrial

UTILITIES: Water and sewer

Zoned Industrial (possible retail site). 405' on Hamlin. 1,890' on Dequindre. Water and sewer available. Will divide.

PDF FLYER: <http://www.farbman.com/Properties/HamlinDequindre -1.pdf>

LISTING AGENT(s): **Jeff Cavazos**

NAI Farbman

December 2011
VACANT LAND PROPERTY LISTINGS

3900 Jackson Rd

Ann Arbor



DIMENSIONS: Acres **SALE PRICE:** \$ 3,000,000

ZONING: **UTILITIES:**

Excluding ice rink

PDF FLYER:

LISTING AGENT(s): **Brian Crawford**

Lapeer Rd and Silverbell Rd

Orion



DIMENSIONS: 57 Acres **SALE PRICE:** \$ 1,650,000

ZONING: **UTILITIES:**

57 acres listed at an aggressive price. Frontage on 3 roads

PDF FLYER: <http://www.farbman.com/Properties/Lapeer-Silverbell%2057%20Acres.pdf>

LISTING AGENT(s): **Brian Crawford**

M-59 and Pontiac Lake Rd.

White Lake Twp.



4.43 Acres - White Lake Twp

DIMENSIONS: 4.43 Acres **SALE PRICE:** \$ 1,600,000

ZONING: G.B. **UTILITIES:** Water and sewer

Prime commercial development site for build-to-suit. Approximately 273' frontage on M-59. Zoned General Business. Utilities available. Cross Access Agreement with Lowe's.

PDF FLYER: <http://www.farbman.com/Properties/White Lake Twp Proposal.pdf>

LISTING AGENT(s): **Ron Goldstone**

Mack and Lakepointe

Detroit



DIMENSIONS: 1.5 Acres **SALE PRICE:** \$ 185,000

ZONING: C-2, P-1 **UTILITIES:** Includes utilities

Great for retail development. Minutes from I-94.

PDF FLYER:

LISTING AGENT(s): **Brian Crawford**

NAI Farbman

December 2011

VACANT LAND PROPERTY LISTINGS

18380 Malyn

Fraser



DIMENSIONS: 1.1 Acres

SALE PRICE: \$ 39,000

ZONING:

UTILITIES:

PDF FLYER: <http://www.farbman.com/Properties/Malyn18380.pdf>

LISTING AGENT(s): **Jeff Cavazos**

2345 Merriman Rd.

Westland



Oakwood Healthcare Systems

DIMENSIONS: 7 Acres

SALE PRICE: \$ 2,500,000

ZONING: Commercial

UTILITIES: Utilities on site

Residential development opportunity.

PDF FLYER:

LISTING AGENT(s): **Mark Yagerlener** **Laney Cavazos**

Michigan Ave.

Pittsfield Twp.



61 Acres - Pittsfield Twp

DIMENSIONS: 61 Acres

SALE PRICE: \$ 80,000 per Acre

ZONING: A-6

UTILITIES:

Flat, clear property. Close proximity to the city of Saline. Over 1,500 SF of frontage on Michigan Ave. Possible uses include: Single family dwelling, golf driving range, greenhouse, schools or daycare, hospital, nursing home or churches.

PDF FLYER: <http://www.farbman.com/Properties/Michigan-Pittsfield Flyer.pdf>

LISTING AGENT(s): **Ron Goldstone**

Michigan Ave and S Morton Taylor

Canton



63 Acres

DIMENSIONS: 63 Acres

SALE PRICE: \$ 14,296,500

ZONING: C-3 regional commercial

UTILITIES:

63 acres of prime commercial land located on the north side of Michigan Ave. fully engineered and entitled. Zones C-3 "regional commercial", All utilities available. Less than 1 mile west of I-275.

PDF FLYER: http://www.farbman.com/Properties/MichiganAve-S MortonTaylor_flyer.pdf

LISTING AGENT(s): **Ron Goldstone** **Paul DeBono**

NAI Farbman

December 2011

VACANT LAND PROPERTY LISTINGS

SE corner of Michigan Ave. Hagger

Canton

DIMENSIONS: 1.63 Acres **SALE PRICE:** \$ 395,000

ZONING: **UTILITIES:**

■ Sale/Lease or build to suit. Approved for 2 - 1,000 sq ft buildings.

PDF FLYER: <http://www.farbman.com/Properties/MichiganandHaggerty.pdf>

LISTING AGENT(s): **Brian Crawford**



Northwestern Hwy

Southfield

18.71 Oakland Commons - Southfield

DIMENSIONS: 18.71 Acres **SALE PRICE:** \$

ZONING: R-C Regional Center **UTILITIES:** DTE, AT&T, Consumers

■ Zoned R-C--Regional Center -- Mixed-use zoning, allows for a blend of office, retail and hospitality. 560 feet of Northwestern / M-10 Highway frontage. Great freeway access.

PDF FLYER: http://www.farbman.com/Properties/Oakland Commons_BuildtoSuitLEEDS.pdf

LISTING AGENT(s): **Ron Goldstone**



Northwestern Hwy

Southfield

6.2 Acres - Southfield

DIMENSIONS: 6.2 Acres **SALE PRICE:** \$ 1,000,000 per Acre

ZONING: B-3 **UTILITIES:**

■ Located in the center of Oakland County. Dense population, strong incomes and high traffic volume. Available for land-lease, build-to-suit, or possible sale. 450' frontage on Northwestern Hwy, and 200' on 12 Mile Rd. Great freeway access.

PDF FLYER: <http://www.farbman.com/Properties/KayeCenter.pdf>

LISTING AGENT(s): **Ron Goldstone**



Redman Rd.

Milan

DIMENSIONS: 28.5 Acres **SALE PRICE:** \$ 1,000,000 per Acre

ZONING: Commercial / Industrial **UTILITIES:**

■ Frontage on Redman Road. Zoned Commercial / Industrial.

PDF FLYER: <http://www.farbman.com/Properties/Redman.pdf>

LISTING AGENT(s): **Jeff Cavazos** **Doug Fura**



NAI Farbman
December 2011
VACANT LAND PROPERTY LISTINGS

Research & Maple

Troy



DIMENSIONS: 2.5 Acres

SALE PRICE: \$

ZONING:

UTILITIES:

PDF FLYER: [http://www.farbman.com/Properties/2.5 Acres Troy Hotel Opportunity.pdf](http://www.farbman.com/Properties/2.5%20Acres%20Troy%20Hotel%20Opportunity.pdf)

LISTING AGENT(s): **Ron Goldstone**

23811 Telegraph

Southfield



DIMENSIONS: 3.09 Acres

SALE PRICE: \$ 350,000

ZONING: Industrial

UTILITIES:

3.09 Acres of Industrial land on Telegraph

PDF FLYER:

LISTING AGENT(s): **Doug Fura**

21307 Telegraph Rd.

Southfield



DIMENSIONS: 30 Acres

SALE PRICE: \$

ZONING: Industrial

UTILITIES: Includes all utilities

16 acres re-development site. Brownfield credits available.

PDF FLYER: <http://www.farbman.com/Properties/Telegraph21301.pdf>

LISTING AGENT(s): **Brian Crawford** **Harold Stulberg**

Telegraph Rd / South of 13 Mile

Franklin



Franklin Commons

DIMENSIONS: 5.4 Acres

SALE PRICE: \$

ZONING: Residential

UTILITIES:

1170' of frontage on telegraph rd. Approximately 200 ft + deep. 7 residential lots fronting Telegraph rd. 5.4 acres.

PDF FLYER:

LISTING AGENT(s): **Hal Stulberg**

NAI Farbman

December 2011
VACANT LAND PROPERTY LISTINGS

Telegraph Rd

14 Acres - Southfield


Southfield

DIMENSIONS: 14 Acres

SALE PRICE: \$ 1,000,000 per Acre

ZONING:

UTILITIES:

 Confidential Listing.

PDF FLYER: <http://www.farbman.com/Properties/Telegraph-Lockdale.pdf>

LISTING AGENT(s): **Ron Goldstone**



Tyler Rd. and Morton Taylor Rd.


Van Buren Twp.

DIMENSIONS: 10.80 Acres

SALE PRICE: \$ 3,763,584

ZONING: C-1

UTILITIES:

 10.80 acres of prime commercial land in rapidly growing Van Buren Twp.

PDF FLYER:

LISTING AGENT(s): **Ron Goldstone**



Ecorse Rd. and Wayne Rd.


Wayne

DIMENSIONS: 5 Acres

SALE PRICE: \$ 500,000

ZONING: Retail

UTILITIES:

 Corner location/retail site. Five flat acres on the southeast corner of Wayne Rd. and Ecorse Rd.

PDF FLYER:

LISTING AGENT(s): **Brian Crawford**



West Rd

Beck West Corporate Park


Novi

DIMENSIONS: 2.29 Acres

SALE PRICE: \$ 200,000

ZONING:

UTILITIES:

 Possible build-to-suit of 19,500 sq. ft., Great R&D Development site. 371' frontage on West Rd. Entrance to the Beck West Corporate Park.

PDF FLYER: <http://www.farbman.com/Properties/West Rd-Novu.pdf>

LISTING AGENT(s): **Jeff Cavazos** **Doug Fura**



NAI Farbman

December 2011
VACANT LAND PROPERTY LISTINGS

Woodward vacant parcels

Land


Detroit

DIMENSIONS: 1.78 Acres

SALE PRICE: \$ 1,400,000

ZONING:

UTILITIES:

 Very large lot with frontage on Woodward.



PDF FLYER: <http://www.farbman.com/Properties/WoodwardVacantParcels.pdf>

LISTING AGENT(s): **Jeanne Gross**